

NOTICE OF LOCATION AND METHOD FOR COUNTING ABSENTEE BALLOTS, POLLING PLACE ACCESSIBILITY, AND INFORMATION CONCERNING VOTING SYSTEMS (13-17-203, MCA)

On this day, April 13, 2023 notice is hereby given by the undersigned clerks of Flathead County, State of Montana that Absentee/Mail/Poll Ballots for the School Elections held on the May 2, 2023, will be counted at the following location on election day:

Cayuse Prairie School – Hand Counting will start before polls close and will continue until all ballots are received by 8:00pm
Whitefish School District Hand Counting will start before polls close and will continue until all ballots are received by 8:00pm
Deer Park School - Hand counting will start before polls close and will continue until all ballots are received by 8:00pm
Swan River School - Hand counting will start before polls close and will continue until all ballots are received by 8:00 p.m.

This statement also gives notice of polling places and accessibility designations for the School Elections

Cayuse Prairie School – 897 Lake Blaine Rd – Accessible from 8am to 8pm
Whitefish School District - 600 East 2nd St, Whitefish - Accessible from 8am to 8pm.
Deer Park School - 2105 Middle Road - Columbia Falls - Accessible from 12:00pm to 8pm
Swan River School - 1205 Swan Hwy, Bigfork- Accessible from 7am to 8pm

Additionally, an Elections Systems and Software (ES&S) ExpressVote ballot marking system will be available for the School Election at the following location(s):

Cayuse Prairie School - 897 Lake Blaine Rd, Kalispell
Whitefish School District - 600 East 2nd St, Whitefish
Deer Park School - 2105 Middle Road, Columbia Falls
Swan River School -1205 Swan Hwy, Bigfork

The voting system will be on public exhibition at the county election office, located at:
290 B North Main
Kalispell, MT 59901

Please see diagrams of the voting system(s), ballot arrangement, and instructions on voting attached

District Clerks:

Cayuse Prairie, Heather Mumby
Whitefish School District, Lucie Shea
Deer Park School District, Peggy Martin
Swan River District, Dee Johnson

**SAMPLE BALLOT
SCHOOL DIST. XYZ
FLATHEAD COUNTY, MONTANA**

May 2, 2023

INSTRUCTION TO VOTERS

THIS BALLOT SHOULD BE MARKED BY FILLING IN THE CIRCLE BEFORE THE NAME(S) OF THE PERSON OR CANDIDATE(S) FOR WHOM THE ELECTOR INTENDS TO VOTE. THE ELECTOR MAY WRITE OR AFFIX A PREPRINTED LABEL IN

THE BLANK SPACES THE NAME OF THE PERSON FOR WHOM HE WISHES TO VOTE AND BY FILLING IN THE CIRCLE BEFORE THE NAME.

**TRUSTEE ELECTION
TWO 3-YEAR TERM
VOTE FOR TWO**

- Jane Doe
- John Doe
- Jayne Smith
- _____

GENERAL FUND MILL LEVY

THIS BALLOT SHOULD BE MARKED BY FILLING IN THE CIRCLE BEFORE THE WORDS "FOR THE ADDITIONAL LEVY" IF YOU WISH TO VOTE FOR THE ADDITIONAL LEVY OR BY FILLING IN THE CIRCLE BEFORE THE WORDS "AGAINST THE ADDITIONAL LEVY

PROPOSITION

Shall the board of trustees be authorized to impose an increase in local taxes to support the general fund in the amount of XXX DOLLARS (\$XXX) per year which is approximately XX mills, for the purpose of: support the Elementary District General Fund?

Passage of this proposal will increase the taxes on a home with a market value of \$100,000 by approximately \$XX and on a home with a market value of \$200,000 by approximately \$XX. The durational limit of the levy is permanent once approved by the voters, assuming the district levies that amount at least once in the next five years.

FOR the Additional Levy

AGAINST the Additional Levy

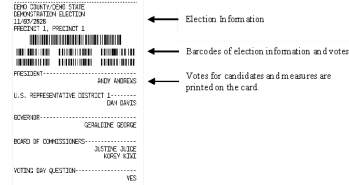
School districts must obtain voter approval for an increase in the number of dollars budgeted for the over-BASE tax levy. The ballot language above contains all information required to be included per [15-10-425](#), MCA. As long as the information listed in [15-10-425](#), MCA is included in the ballot language, trustees are allowed to use their discretion in formulating ballot language for general fund elections.

INSTRUCTIONS ON HOW TO VOTE ON AN EXPRESSVOTE VOTING SYSTEM



The ExpressVote is a ballot-marking system that is available for anyone to use during the upcoming election. Its main purpose is to allow voters with disabilities and other special needs to mark a ballot privately and independently.

1. Inform the election official that you wish to vote using ExpressVote.
2. You will be issued a ballot card.
3. Insert the ballot card into the ballot feed tray on the front of the machine.
4. The screen will display instructions and the ballot choices.
5. The following helpful options are available:
 - a. Change contrast and font size for readability
 - b. Audio headphones
 - c. Braille keypad
 - d. Connection for Sp-n-Puff personal device
6. Make your selections by using the touch-screen capability, or by using the keypad.
7. After you have completed your selections, the ExpressVote will confirm your selections on the screen, and by audio if you select the audio option.
8. After verifying your selections, the ExpressVote will mark and print out your ballot card.



9. Confirm your choices on the printed and marked ballot card.
10. Return the marked ballot card to the election official.
11. You can request help anytime during the process.